

BIG Essentials Specification Sheet

Recessed Rocky – 15

Project Name:

Type No:

PRODUCT DESCRIPTION

Recessed mounted LED Profile.

Manufactured in Australia.

Customisable to suit any projects requirements.

3-step McAdam binning and high 98 CRI with 98 R9.

Natural anodised silver as standard.

White or black powder coated options available.

Comes with 1m bare tail standard, option for 250mm connector set.

PMMA acrylic opal or frosted lens' available.



LUMINAIRE SPECIFICATION

Width:	23mm
Height:	15mm
IP Rating:	IP20 or IP65
Cutting Increment:	45mm
Max Profile Supply Length:	2.5m
Max Single Feed Strip Length:	6W – 20m 10W – 15m 18W – 10m

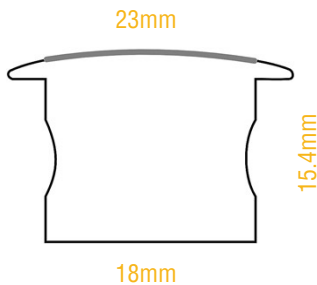
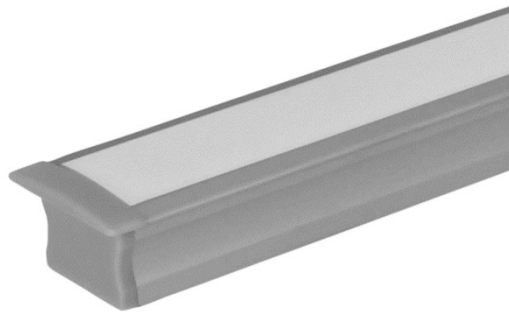
TECHNICAL

Life maintenance	L80 / B10 @ 74,000 Hours
Strip Output	6W/m @ 600lm 10W/m @ 1000lm 18W/m @ 1600lm
CRI / CCT	2700K 3000K 4000K @ CRI 98
Optics	Opal – L.O.R. 65% with dot free finish Frosted – L.O.R. 85% where higher efficiency is required
Drive current	Remote 24V DC constant voltage
Dimming	Dimming options available to suit: phase DALI 0-10V DMX Casambi

CODE BUILDER

Model	Output	Colour Temp	Optic	Finish	IP
RR15	0600 6W/m @ 600lm	W27 2700K	O Opal	SLV Silver	20 IP20
	1000 10W/m @ 1000lm	W30 3000K	F Frosted	WHT White	65 IP65
	1600 18W/m @ 1600lm	W40 4000K		BLK Black	

Example RR15-0600-W30-O-SLV-20



Components supplied as standard.