

**Project Name:**

**Type No:**

### PRODUCT DESCRIPTION

- Flexible vertical bend >300mm LED ribbon.
- UV, flame, chlorine and salt resistant.
- Continuous length up to 20 metres.
- Colour temperature ranges from 2400K – 4000K.
- Ambient temperature -20°C to 45°C.
- Remote 24V constant voltage driver.



### LUMINAIRE SPECIFICATION

Width:	20mm
Height:	18mm
:	IP67
IP Rating:	White - 50mm
Cutting:	Tuneable White / Warm dim – 62.5mm
Increment:	RGB – 62.5mm RGBW – 100mm White - 5m single feed
Max Length:	Tuneable White / Warm dim – 5m RGB – 13m RGBW – 10m

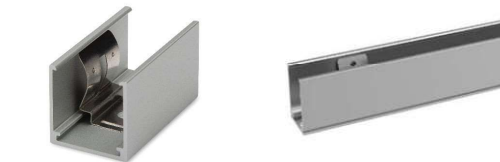
### TECHNIC

Life	L70 / B10 up to 50,000 hours
maintenance Output	White - 20W 900lm Tuneable white – 20W 860lm Warm dim – 18W 800lm RGB – 12W RGBW – 16W
CRI / CCT	2400K / 2700K / 3000K / 4000K / Tuneable white / Warm dim / RGB / RGBW
Optic	Opal
Drive current	diffused Remote 24V DC constant voltage

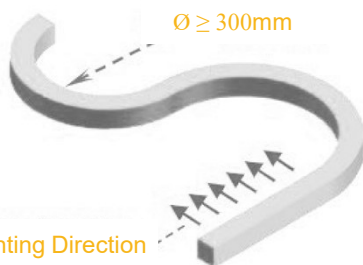
### CODE BUILDER

Model	Colour Temp	Wattage	Power Feed
Neo-L-VB	24 2400K	—	1 Bottom connector
	27 2700K		2 Front connector
	30 3000K		3 Side connector
	40 4000K		
	TW Tuneable white (2700K-5500K)		
	WD Warm dim (1800K-3000K)		
	RGB		
	RGBW		

**ACCESSORIES:** Mounting clip or channel



18mm



Ø ≥ 300mm

Lighting Direction